

Report Abuse Next Blog»

[Create Blog](#) [Sign In](#)

# hatchets and skewers

## CUTTING EDGE CONTEMPORARY ART

FRIDAY, FEBRUARY 19, 2010

### enter the drag



Do I even have to tell you where you're going tomorrow night?  
To *Curator's Office*, of course, for the opening of Jason Horowitz's new show, *DRAG*. Duh. See a [gallery of images](#) from the show [here](#).

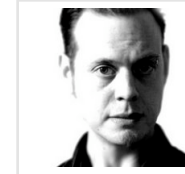
I currently have the distinct pleasure of being able to work everyday in the shadow of [two monumentally scaled Horowitz drag photos](#)--each a ten foot long beast, occupying one end of the Meyer Gallery for *Transhuman Conditions*. The show remains open through April 3; expect a review in the WaPo sometime next week.

The images in the show on 14th Street will be much more intimately scaled: At a mere 42" X 63", they're practically snapshot-sized, right?

Anyway, I will definitely be there, and hope to see you in



#### ABOUT ME



**JHCUDLIN**

**WASHINGTON, DC, UNITED STATES**

Jeffrey Cudlin is an artist, curator, art critic, and musician living and working in Washington, D.C. He serves as the Director of Exhibitions for the Arlington Arts Center and writes for the Washington City Paper.

[VIEW MY COMPLETE PROFILE](#)

#### PREVIOUS POSTS

[snowpocalypse now](#)

[some prints are bigger than others](#)

[now it begins...](#)

[ugly, dull, and fascinating as heck](#)

[community-building with pitchforks and torches](#)

[first introspective](#)

[hand-wringing/holding panel di...](#)

[checking out and signing off corcoran to build temporary "big top" addition](#)

attendance as well.

*Pictured: Jason Horowitz, **Ba'Naka**, archival pigment print, 80 by 120 inches, 2009*

POSTED BY JHCUDLIN AT 9:35 AM 

---

0 COMMENTS:

[POST A COMMENT](#)

LINKS TO THIS POST:


[CREATE A LINK](#)

[<< Home](#)

video art wednesday

---

FIND ME ON  
FACEBOOK



facebook

Name:  
Jeffry Cudlin

Email:  
jhcudlin@yahoo.  
com

Status:  
has a lot of work  
to do.

---

